



Church Street Precinct Master Plan



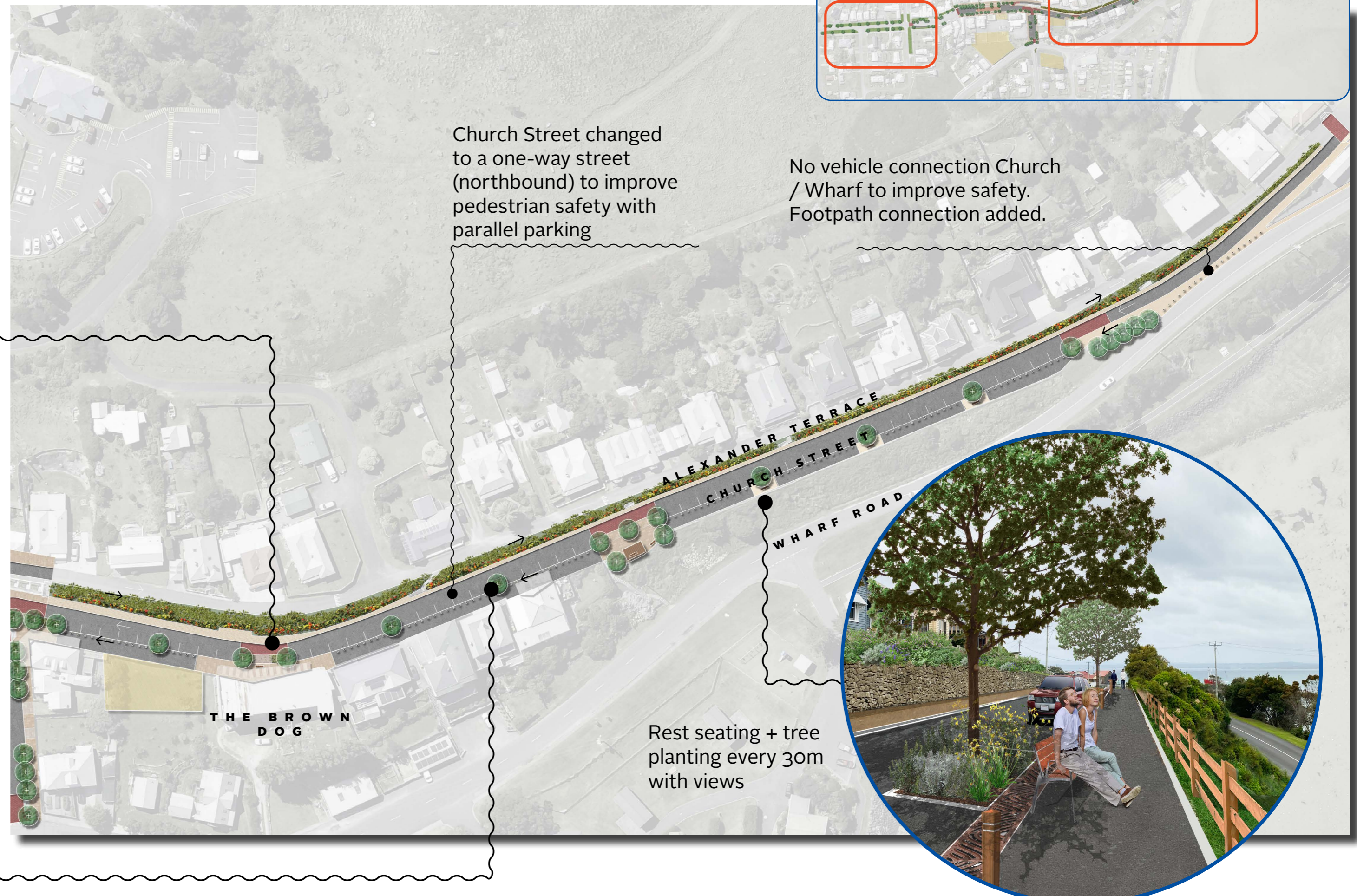
Church Street South



Seating, dining, landscape node and slow point at shops and post office



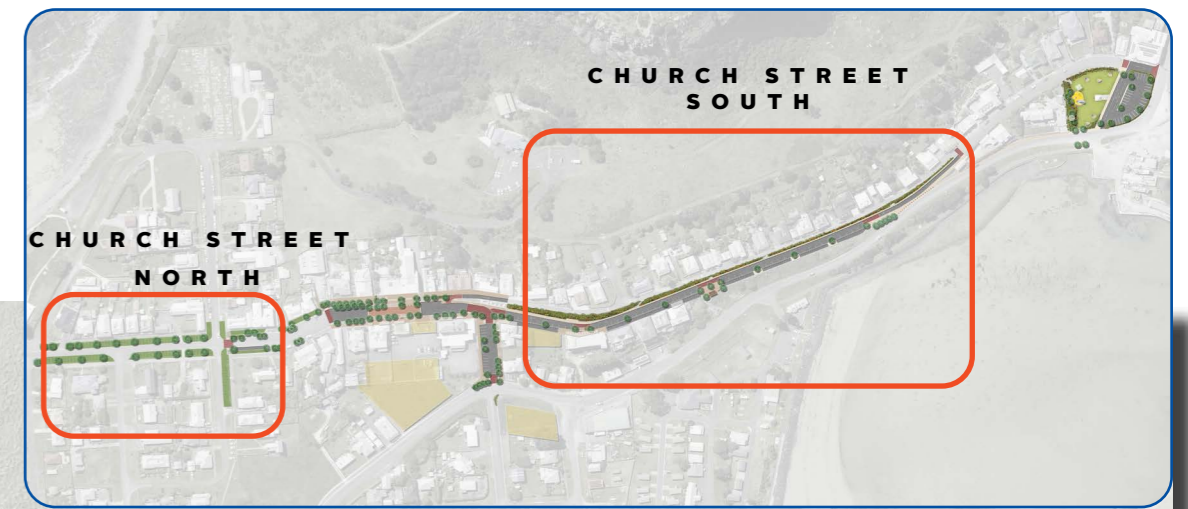
Tree planting, seating, landscaping of median along Church St South



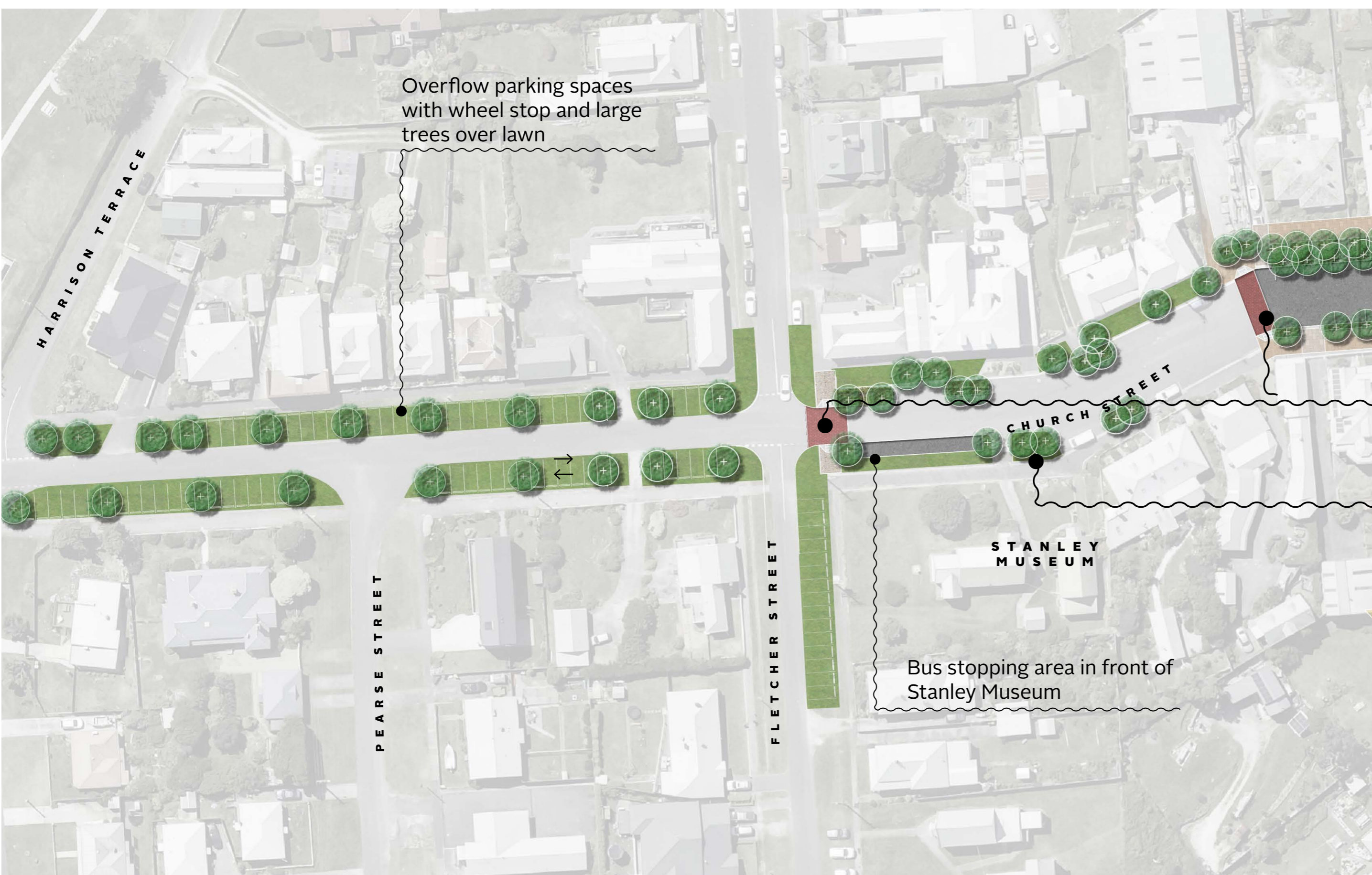
Church Street changed to a one-way street (northbound) to improve pedestrian safety with parallel parking

No vehicle connection Church / Wharf to improve safety. Footpath connection added.

Rest seating + tree planting every 30m with views



Church Street North



Overflow parking spaces with wheel stop and large trees over lawn

Bus stopping area in front of Stanley Museum



Improved pedestrian crossing points



Landscaped garden beds + street trees



To view the master plan, provide your feedback or find out more about the project, scan the QR code or visit

<https://www.circularhead.tas.gov.au/our-council/current-projects/church-street-precinct-master-plan>



Planning
Landscape Architecture
Urban Design
Social Planning

